

- ALL INCLUSIVE 3-DAY / 2-NIGHT -

# Farm Stay

@ LINDUM IN THE MIDWEST



Hosted by

**New Leaf Connect**

*2022 Information Leaflet*



# Lindum Farm Stay

In collaboration with NEW LEAF CONNECT

## About Lindum Farm Stay

Set in the heart of the Wheatbelt, Lindum Farm is a third generation family run farm. Owners, Roger and Angela, are very passionate about farming and the food they produce which they love to share with visitors. They farm mostly broadacre crops including wheat, barley, lupins and canola and they also run a small flock of merino sheep and raise poultry as well.



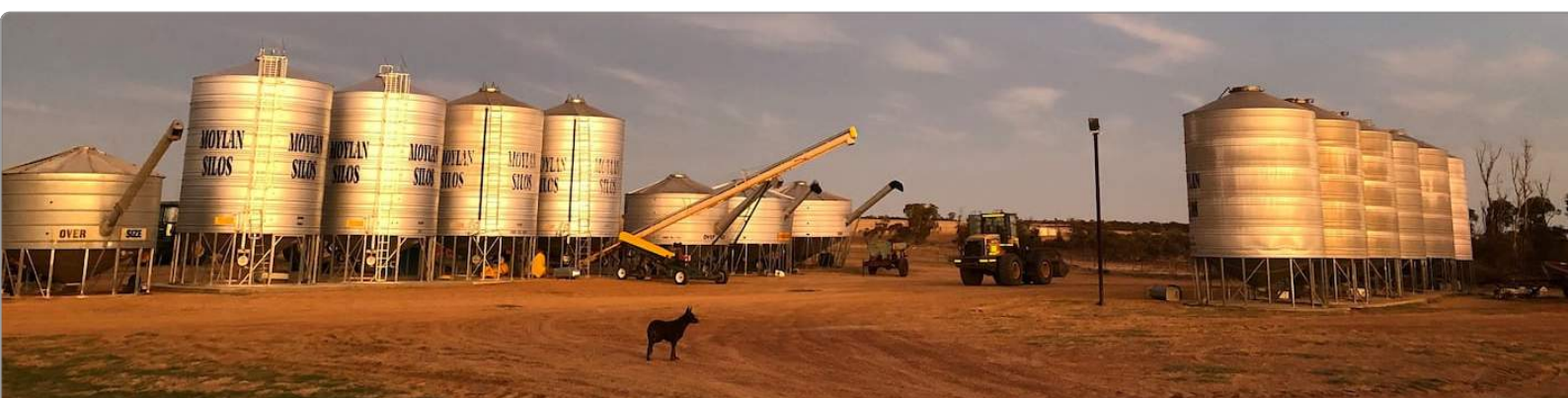
Their beautiful property boasts a range of native flora and fauna too, with an abundance of seasonal wildflowers and native birds. Bushwalks are one of the best ways to see and experience these with close up encounters and the chance to disconnect from the hustle and bustle of everyday life.

## TOUR HIGHLIGHTS

Visits to Mingenev, Carnamah,  
Perenjori, Morawa & Canna  
Mingenev Bakery  
Tractor Museum

North Midlands Project  
Coalseam Conservation Park  
@ *LINDUM FARM STAY*:

Farm accommodation  
Bush Walks & Seasonal Wildflowers  
Locally produced homecooked meals  
Campfires & Night Skies



# ITINERARY OVERVIEW

## Lindum Farm Stay 3-day / 2-night Itinerary

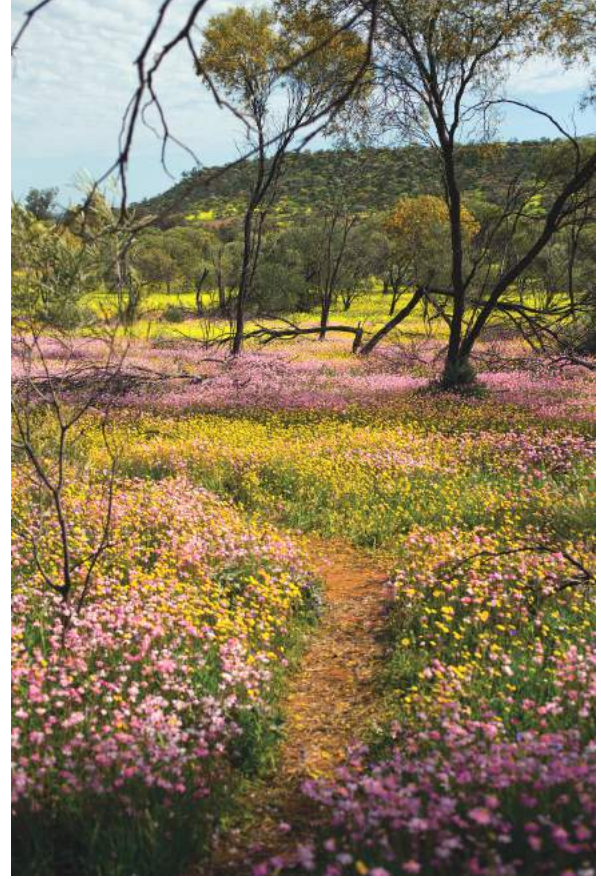
*\*Itinerary subject to change due to weather and unforeseeable circumstances.*

### Day 1

**AM** Meeting at 8:30am, we'll depart from Dongara and drive east to Mingenew. Here we will pick up any guests joining us from this beautiful little country town before exploring the main street and stopping at the famous local bakery! We'll then carry on our way down to Carnamah, stopping at the impressive tractor museum. We'll get a dose of art, culture and history along the main street with visits to The Exchange - home of the North Midlands Project, the Old Bank to view their current art exhibition, the Carnamah Museum and local gift shop, The Bush Basket.

**PM** We'll pick up a picnic lunch from Carnamah's famous cafe, One L of a Good Feed, to enjoy on the verandah of Macpherson Homestead, along with a tour inside this beautifully restored building which gives a glimpse into farm life in years gone by. From here we head out to Lindum Farm Stay.

**Evening** Walking tour of the farm, followed by locally grown and home cooked roast lamb for dinner with a campfire under the night sky to end the day.



*\*Coalseam Conservation park, photo courtesy of Australia's Coral Coast  
Wildflower photos below courtesy of Lindum Farm Stay*

### Day 2

**AM** Following breakfast at your leisure you'll be given a 3 hour guided bushwalk by farm owner, Angela, to see seasonal wildflowers and pristine bushland.

**PM** In the afternoon you'll have the option to explore nearby towns and sites, or you might wish to have some down time on the farm.

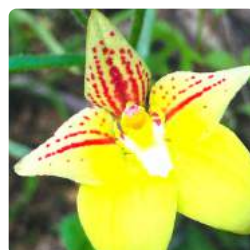
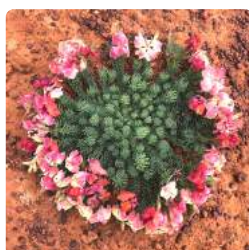
**Evening** Homecooked dinner by the fire.

### Day 3

**AM** We'll depart Lindum Farm Stay after breakfast traveling along inland roads via Perenjori, Morawa and Canna (during wildflower season) before reaching the Coalseam Conservation Park. Along the drive we are bound to see a range of seasonal wildflowers.

**PM** A picnic lunch will be enjoyed in the Coalseam Conservation Park, famous for it's abundant display of wildflowers during wildflower season (July to September), its breathtaking scenery and unique coal deposits which can be seen on the surface of the rocks - one of the few places on Earth where you can witness this.

The tour aims to return to Dongara at 3pm.



# ACCOMMODATION & MAP

## The Cottage & The Farm House

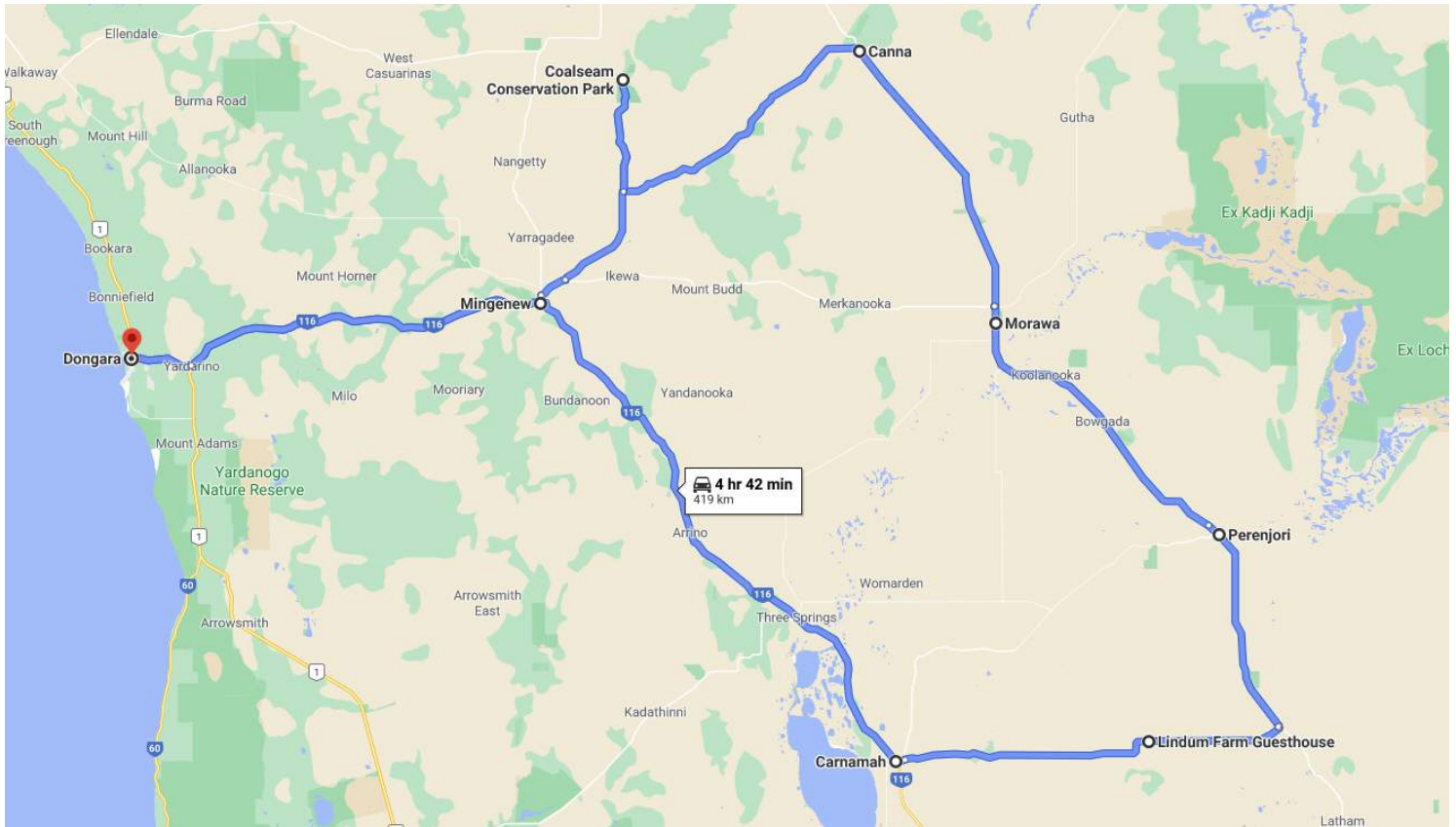
Lindum Farm Stay offers humble accommodation with full kitchen facilities, separate bathroom and toilet, and comfortable lounge.

There are plenty of outdoor areas where you can enjoy a cuppa, listen to the birds and take in the fresh country air and warm sunshine. The bush fire pit will light up the evening conversation where you can sit back and see the beautiful crystal clear night sky.

Rooms are double and twin single share which are allocated based on availability and tour group dynamics. Amenities are shared.



## Where the 3-day tour will take you:



## Things to note:

- This tour is welcoming of all ages and is limited to 8 guests only.
- The weather may result in a modified itinerary from what is outlined here.
- All main meals and some morning and afternoon teas are provided, additional purchases can be made at guests own cost at bakery and cafe stops. Any food allergies will be accommodated for as best as able. Complimentary alcohol is provided at some meals.
- Space in the tour bus is limited so all guests will be restricted to 1 small carry-on size luggage or small-medium sized duffle bag.
- Easy walking level, but sturdy shoes are a must. To participate in all activities, guests must be able to step up equivalent of 3 steps to enter the tour van.

# PRICE PER PERSON

**\$855**

Price includes ALL transport, accommodation, main meals, entry fees and activities.

Includes GST.

**For more information or to book give us a call!**

Turn over a new leaf, locally. Connect with us today.

✉ [hello@newleafconnect.com.au](mailto:hello@newleafconnect.com.au) 📱 0474 922 552 🌐 [www.newleafconnect.com.au](http://www.newleafconnect.com.au)  
📷 @newleafconnect 📘 @newleafconnect.dongara